

Growth & Regeneration Scrutiny Commission
Thursday 28 September 2023
Joint Working on Transport Schemes



Contents

- Introductions
- Overall regional governance
- Overview of key projects
- Overview of Combined Authority led project – M32 Sustainable Transport Corridor and Hub
- Overview of BCC led project – A37/A4018
- Update on CRSTS



Introductions

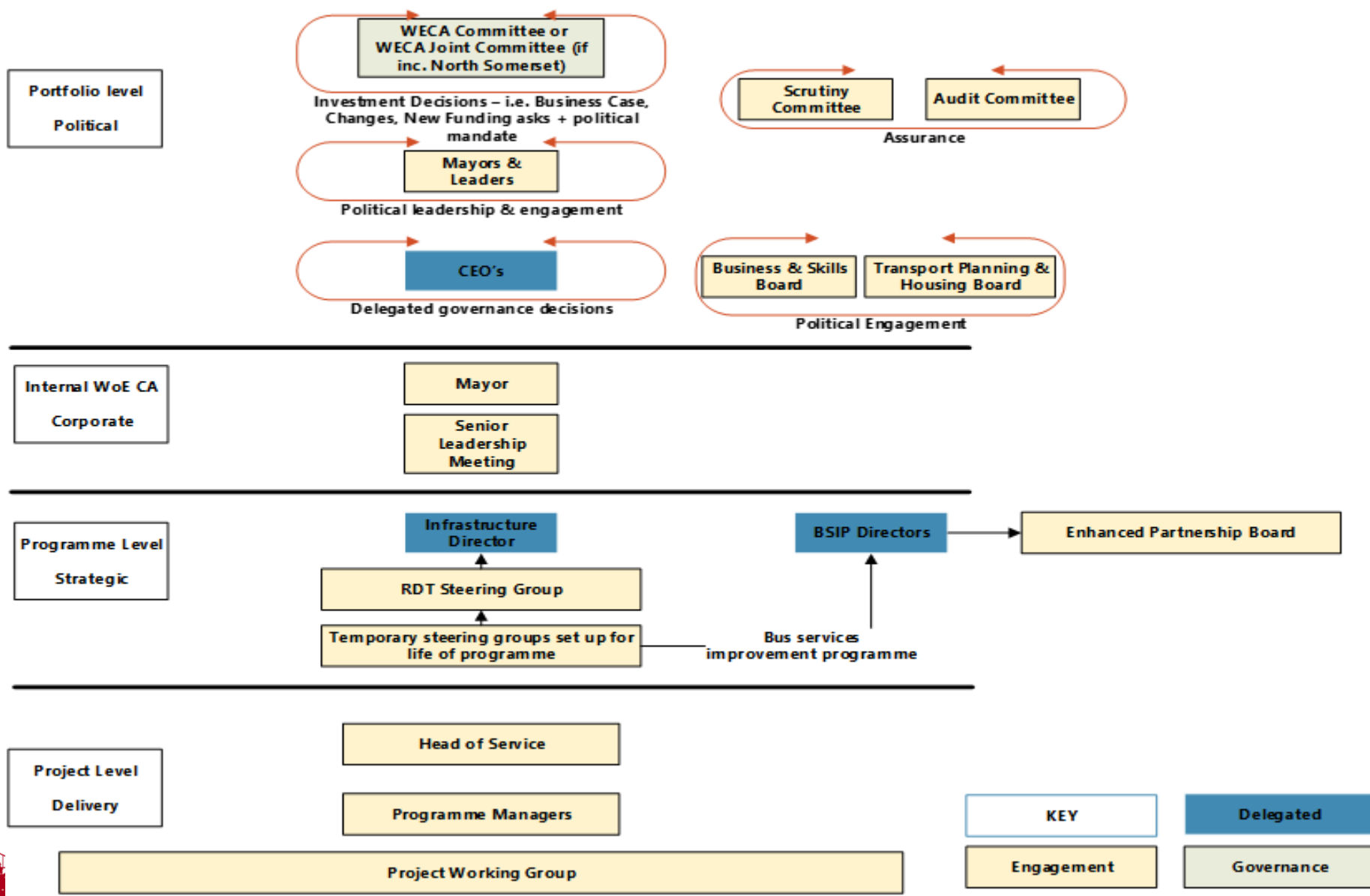
- John Smith, Executive Director – Growth & Regeneration, Bristol City Council
- Alex Hearn, Director – Economy of Place, Bristol City Council
- Adam Crowther, Head of City Transport, Bristol City Council

- David Gibson, Director of Infrastructure, West of England Combined Authority
- Malcolm Parsons, Head of Capital Delivery, West of England Combined Authority





Combined Authority governance and stakeholder engagement structure



Shown in Green is our formal decision making forums.

Decisions can be delegated to CEO's and to Infra Directors monthly meeting.

Shown in yellow are engagement meetings/points.

Info on Detailed delegations are listed in the constitution and in the Committee Decision log - see PMO share site for link

Combined Authority Infrastructure governance

Directors of Infrastructure

Frequency – monthly

Chair – CA Infrastructure Director

Attendees – Directors of Infrastructure - BANES, BCC, SGC, NSC, CA PMO

High level agenda – To provide oversight and direction to all Combined Authority funded projects. To assure the ongoing performance of portfolio, set direction for strategic priorities, unlock emerging/critical issues that were escalated from delivery teams or the RDT steering group. To provide support and advice on wider stakeholder engagement. As delegated by the Committee make decisions on funding requests, changes and business cases within specified tolerances.

Directors of Infrastructure

Frequency – weekly

Chair – CA Infrastructure Director

Attendees – Directors of Infrastructure from BANES, BCC, SGC, NSC, CA PMO

High level agenda – To provide support to projects on unlocking emerging/critical issues, to provide oversight to projects at key junctures in their delivery. To provide support and advice on wider stakeholder engagement.

RDT Steering Group

Frequency – monthly

Chair – Head of Capital Delivery

Attendees – Heads of Service - BANES, BCC, SGC, NSC, Head of Transport Strategy CA, Head of Integrated Transport Operations CA, CA PMO

High level agenda – To provide guidance and support for all Combined Authority funded projects by providing guidance to new projects, assessing the impact of options, business cases, changes and other decisions. To ultimately make recommendations to Directors

Temporary Steering Group

Frequency – monthly

Chair – SRO

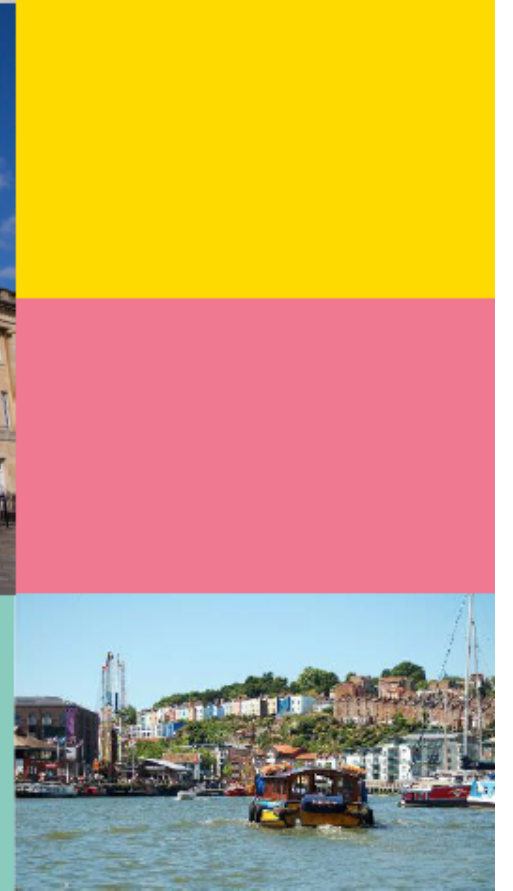
Attendees – As agreed

High level agenda – To provide guidance and support for all specified project by providing guidance, assessing the impact of options, project business case, change and other decisions. To ultimately make recommendations to RDT Steering Groups.

Selection of
key projects
and lead
delivery
organisation

Project Name	Funding Programme	Stage	Lead Organisation
CRSTS - Bristol City Centre sustainable corridor	CRSTS	Developing OBC	Bristol City Council
CRSTS - Bristol to Hengrave Corridor (A38 South to metroBar to Hartcliffe)	CRSTS	Developing OBC	Bristol City Council
East Bristol (St George) Liveable Neighbourhood	CRSTS	Developing FBC	Bristol City Council
New Cut Bridge (Maintenance Challenge Fund Bristol)	CRSTS	Delivery	Bristol City Council
CRSTS - B2B Bristol to Emory Road Sustainable Corridor (A4 Strategic Corridor)	CRSTS	Developing OBC	Combined Authority
CRSTS - B2B Keynsham to Bath Sustainable Corridor	CRSTS	Developing OBC	Combined Authority
CRSTS - M32 Corridor & Hub	CRSTS	Developing OBC	Combined Authority
CRSTS - Portway Corridor & Hub (A4 Portway)	CRSTS	Developing OBC	Bristol City Council
Bristol Temple Meads (Quarter) Inland Enabling Works	BTQ	Delivery	Bristol City Council
CRSTS - Stockwood to Cribbs Corridor (A37/A4018)	CRSTS	Development	Bristol City Council
A4018 Corridor Improvements	CRSTS	FBC Approved	Bristol City Council
Bristol Temple Meads Eastern Entrance	BTQ	Delivery	Combined Authority
Temple Quarter Regeneration Programme	BTQ	Delivery	BCC/Combined Authority
Future4WEST	Mass Transit	Developing SOC	Combined Authority
MetroWest Phase 2	MetroWest	Developing FBC	Combined Authority
Bristol CC Development & Delivery Plan	Stand Alone	Feasibility/Option	Bristol City Council
Hengrave Infrastructure	Stand Alone	Developing FBC	Bristol City Council
Bristol Beacon Phase 2	Stand Alone	Delivery	Bristol City Council
Western Harbour	Stand Alone	Feasibility/Option	Bristol City Council

M32 Sustainable Transport Corridor and Hub



Phasing

Phase 1

Reclassification of the M32

Bus lanes inbound and from J2 outbound and implementation of a signage strategy

Mobility hub including building, parking spaces for vehicles (inc. EVs), bikes (motorised, pedal and electric) and scooters

Land purchase

Planning application, surveys and safety assessments (RSA1 / GG104)

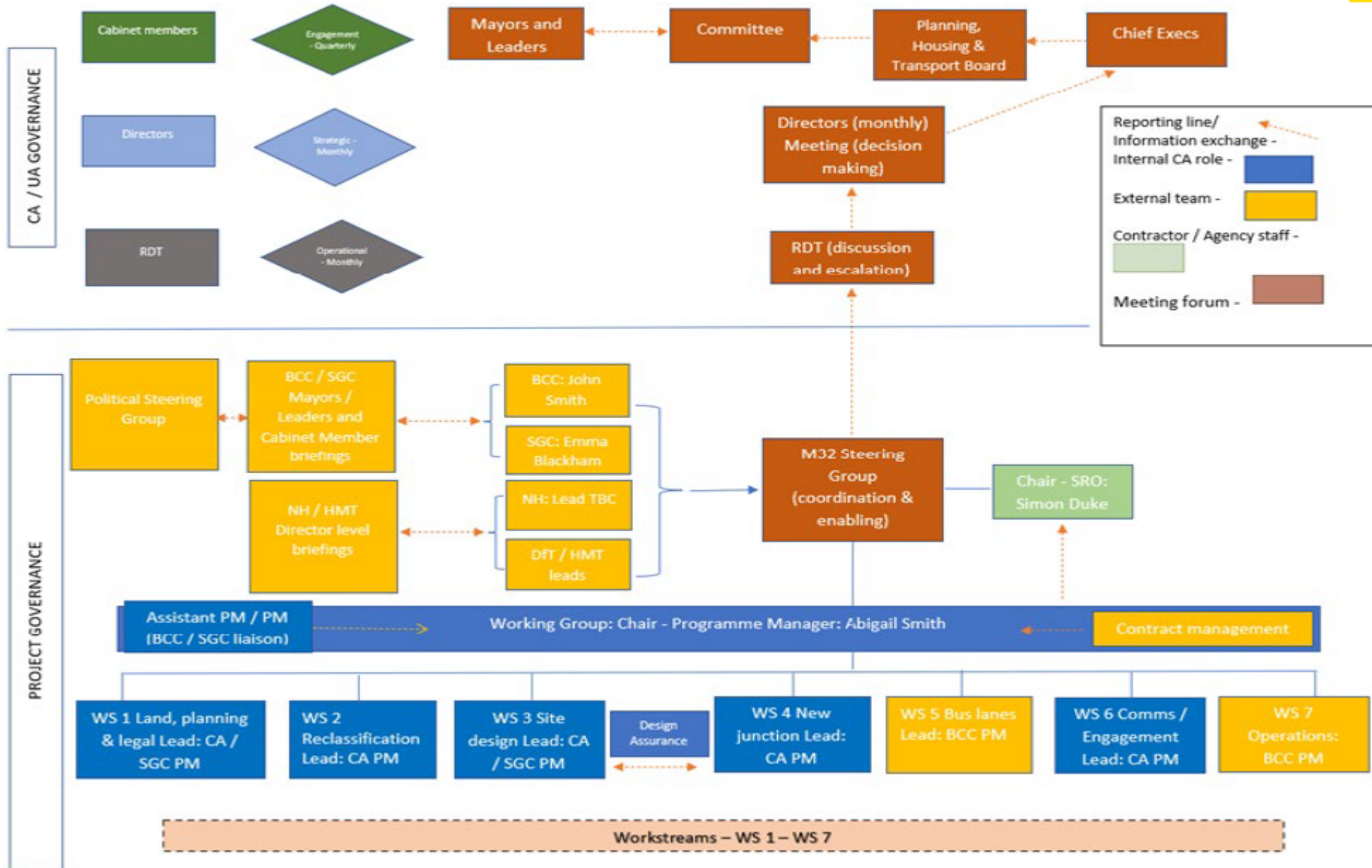
Construction: new at grade junction access

Phase 2

- De-trunking of the M32
- Completion of bus lanes
- Bus stops along the route



Governance structure

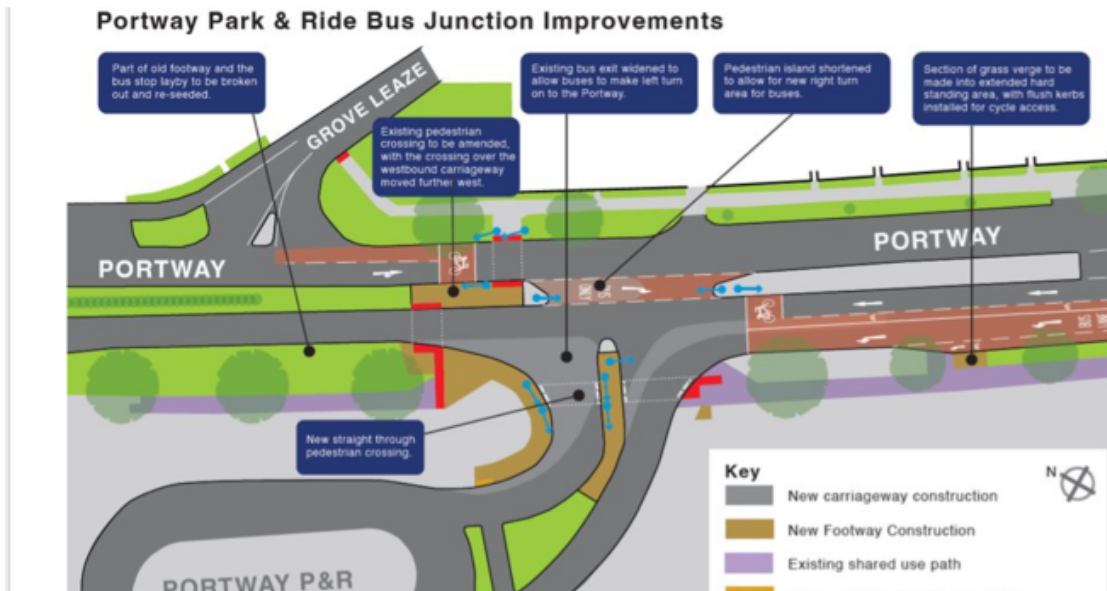


BCC led project: A4 Portway corridor and hub

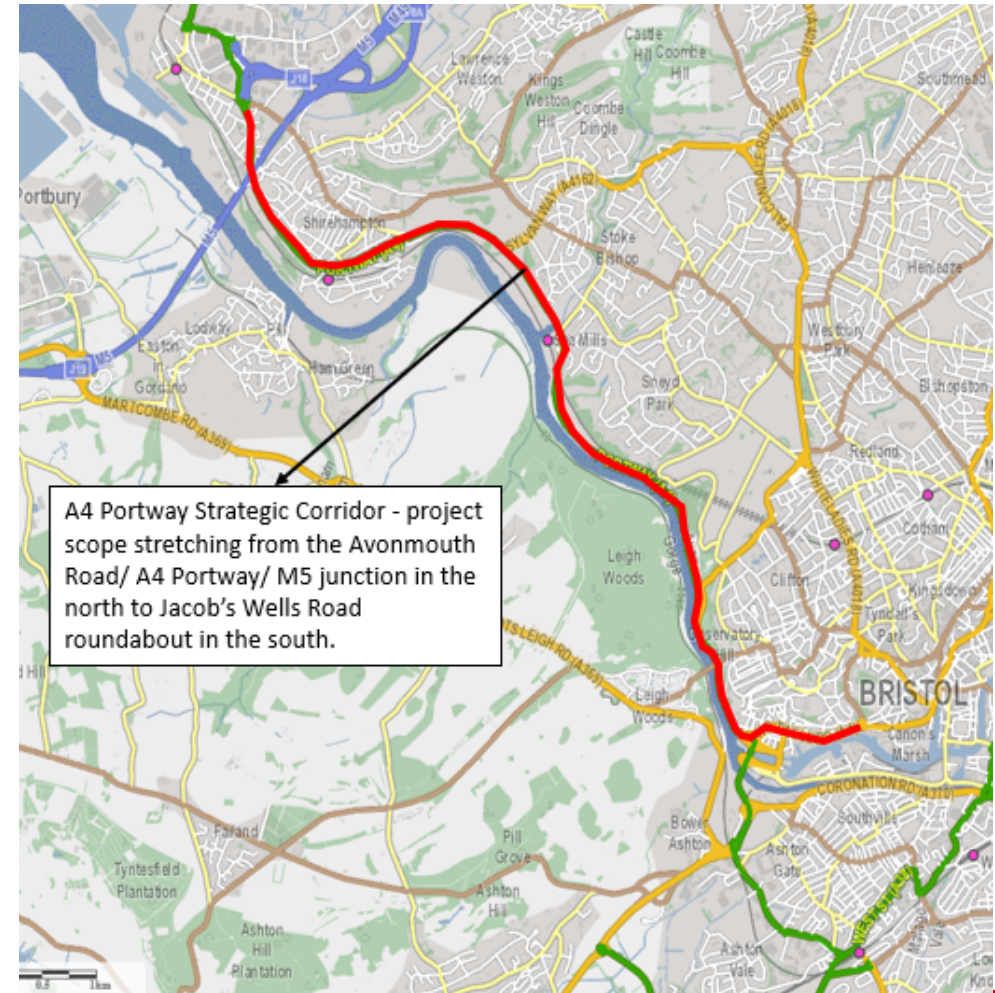


Phasing

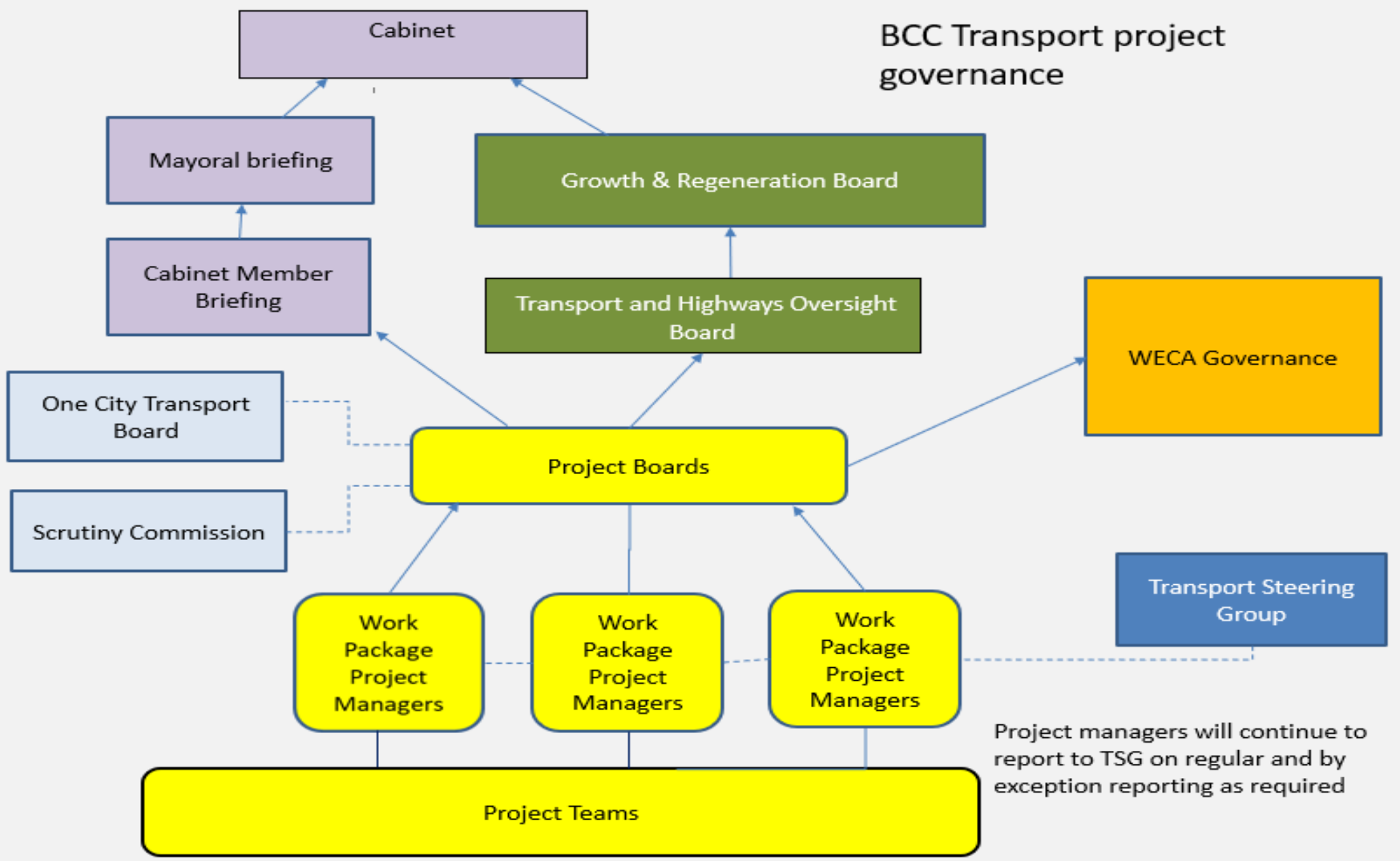
Phase 1: Park & Ride access improvements



Phase 2: Corridor improvements



BCC Transport project governance



City Regional Sustainable Transport Settlement (CRSTS)

- Re-baselining exercise – DfT advised that they would accept a revised delivery and scope proposal to enable delivery of CRSTS outcomes within the current funding allocation
- Overall, there is a minor reduction in scope in Bristol led projects
- More detail on CRSTS scope changes across the programme will be available in the 6th October Combined Authority Committee paper
- All rescoping will be subject to DfT approval
- CRSTS 2 – DfT have indicated that there will be a follow up funding settlement but there is no commitment on funding amounts to date.
- DfT indicate that a submission will be required in Summer 2024



Questions

